

Accessing Pentad Maps for Zimbabwe


Having access to maps is the most important aspect for any atlas project and for SABAP2 in Zimbabwe this will be critical. If you have internet access, here is a 10-step process to get pentad maps (especially for unatlased pentads) off the website, and you don't even have to login to get them.

1. Open the website <http://sabap2.adu.org.za/>



All years	Observers: 1157	Cards: 82500	Records: 43
2013	Observers: 239	Cards: 1342	Records: 7
SummerMAP	Observers: 300	Cards: 2914	Records: 16

home news whats on? checklists downloads stories forum LIVE se
How to participate species coverage maps summaries special watch r
New incidental record



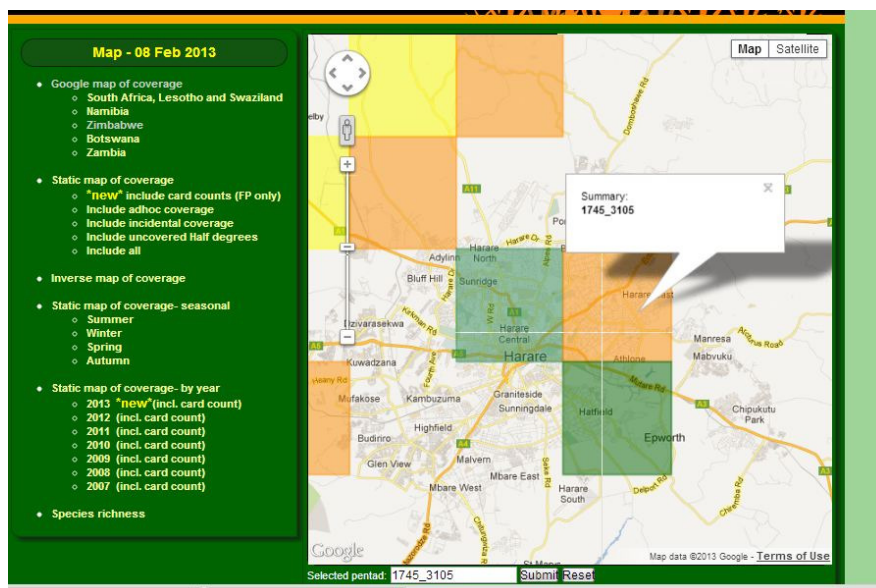
home news whats on? checklists downloads stories forum LIVE se
How to participate species coverage maps summaries special watch r
New incidental record

Map - 08 Feb 2013

- Google map of coverage
 - South Africa, Lesotho and Swaziland
 - Namibia
 - Zimbabwe
 - Botswana
 - Zambia
- Static map of coverage
 - "new" include card counts (FP only)
 - Include adhoc coverage
 - Include incidental coverage
 - Include uncovered Half degrees
 - Include all
- Inverse map of coverage
- Static map of coverage- seasonal
 - Summer

2. Click on 'coverage maps'

3. Click on Zimbabwe under 'Google map of coverage'



Map - 08 Feb 2013

- Google map of coverage
 - South Africa, Lesotho and Swaziland
 - Namibia
 - Zimbabwe
 - Botswana
 - Zambia
- Static map of coverage
 - "new" include card counts (FP only)
 - Include adhoc coverage
 - Include incidental coverage
 - Include uncovered Half degrees
 - Include all
- Inverse map of coverage
- Static map of coverage- seasonal
 - Summer
 - Winter
 - Spring
 - Autumn
- Static map of coverage- by year
 - 2013 (incl. card count)
 - 2012 (incl. card count)
 - 2011 (incl. card count)
 - 2010 (incl. card count)
 - 2009 (incl. card count)
 - 2008 (incl. card count)
 - 2007 (incl. card count)
- Species richness

Summary
1745_3105

Selected pentad: 1745_3105 Submit Reset

4. Zoom into the area you are interested in

5. Click on the map. The pentad code will be automatically displayed in the box under the map next to the submit button. (for areas that are not already coloured). Coloured pentads that are hyper-linked will pop up as a bubble if you click on them and you will see the pentad code in the bubble, the box does not generate that pentad code, so manually fill that in. Ensure the pentad code is displayed in the box next to the submit button. 6. Click on the 'Submit' button, next to the box.

home news whats on? checklists downloads stories forum LIVE seminars contact us
 How to participate species coverage maps summaries special watch register Old site
 New incidental record

Pentad summary :

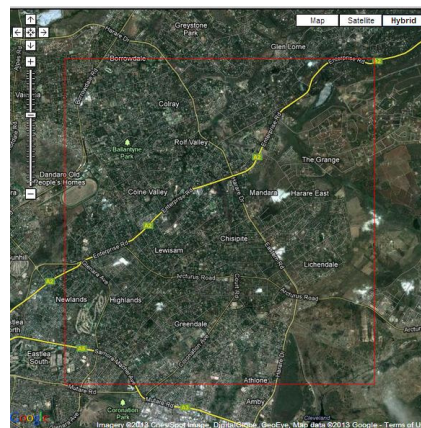
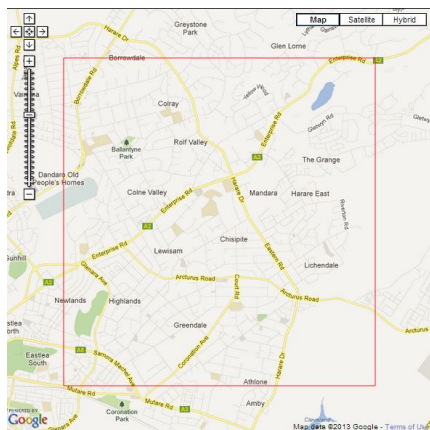
Monthly submissions

Latest 50 cards | Pentad species list | Google map

Alphabetical order | Reporting rate order

Ref No	English Name	Scientific Name	Rarity regions	Full protocol		Ad hoc Pr	
				Sightings	Reporting rate	Sightings	Ref

7. This will take you to the pentad summary page where you can get to the map with pentad layer. 8. Click on the 'Google map' link.



9. The map feature opens in a new window. The red square indicates the pentad boundaries. To get the satellite features and map features shown here, click the hybrid button on the upper right hand side of the map, see below. Note: This is an urban map. If you live in the sticks, it won't have these features. And if you want to generate several maps you must refresh the page (go back to the original map of Zim and refresh) before zooming in again and choosing a new pentad area. Otherwise the map will display previously selected pentads.

10. You can then either save the map (press Ctrl-S) or print the map (Ctrl-P). You may need to adjust your printer settings ('Scale to paper size' option) to print the map on one A4 page.

Happy Atlasing

See: Facebook: Sabap2 Zimbabwe.

Soon to be updated www.birdlifezimbabwe.co.zw